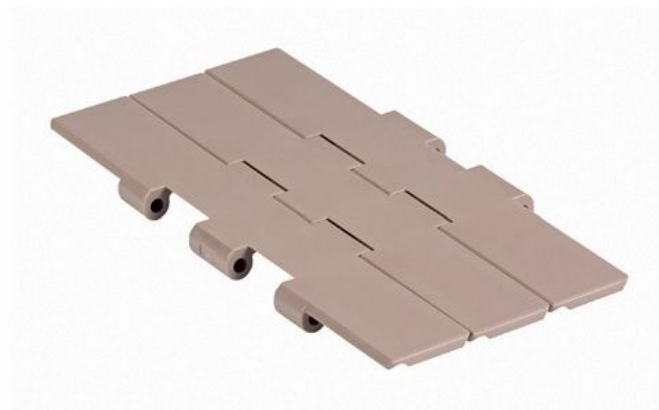


### Slat Top 821

**Slat Top 821** is a straight running plastic chain with a stainless steel pin. Top plate thickness is 5.0 mm (0.16"). The 821 chain is considerably stronger than 820 chain and is available in widths up to 12". Applications include food products, containers and bottling lines.

Our chains are made from Trilon 1000 a high molecular weight Acetal with wear resistant additives that provide superior wear resistance and toughness allowing it to replace stainless steel chain in many applications.



### Specifications

Physical Properties	Metric	Inch
Width	190.5 mm	7.50 in.
	254.0 mm	10.00 in.
	304.8 mm	12.00 in.
Nominal Tensile Strength	3,000 N	674 lbf
Pin Material	Stainless Steel	
Colors	Tan is standard, Blue and White are custom order	
Packaging	10 ft. standard, any Length available	

The data listed above are typical properties, and as such are dependent on the operating environment. No warranties, expressed or implied, including patent warranties, or warranties of merchantability or fitness for use, are made with respect to the product information.



4974 Bird Drive  
Stockbridge, MI 49285  
(734) 255-6400

[www.brandt-mfg.com](http://www.brandt-mfg.com)